

Summary of Statistics Covering April- June 2009 Quarter

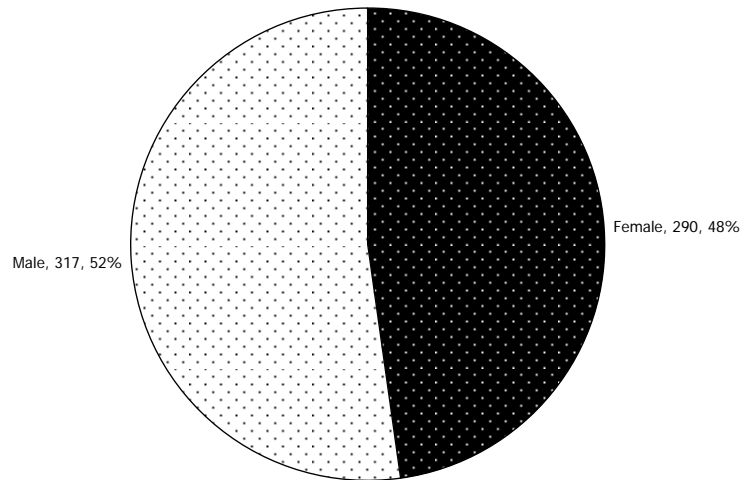


Figure 1. Gender of refugee teachers registered onto the National Refugee Teachers Database by the end of April 09.

- Total of 94 registrations were received during the second quarter of the year covering April, May and June 09. The total number of clients on the National database is now 607 of which 52% (316) are men and 47% (285) are women.

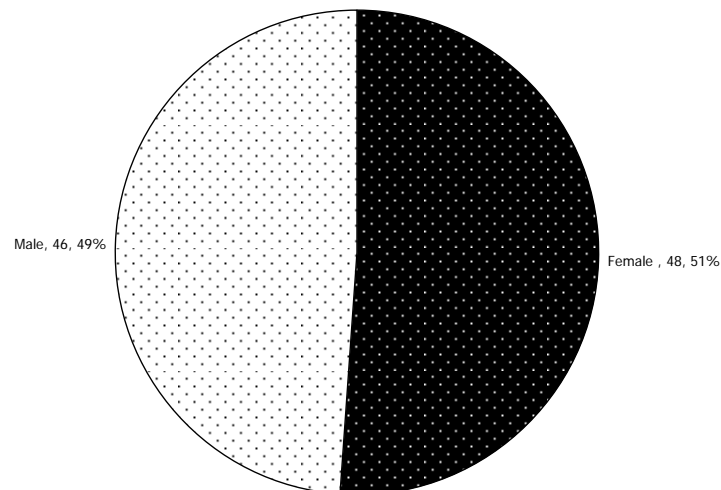


Figure 2. Total of refugee teachers registered on the database during April- June 2009 quarter by gender.

- The gender divide of registrations received during the second quarter is very close to 50:50.

British Refugee Council, (commonly called the Refugee Council) is a company limited by guarantee registered in England and Wales, [No 2727514] and a registered charity, [No 1014576].
Registered office: 240-250 Ferndale Road, London SW9 8BB, United Kingdom. VAT reg no: 936 519 988



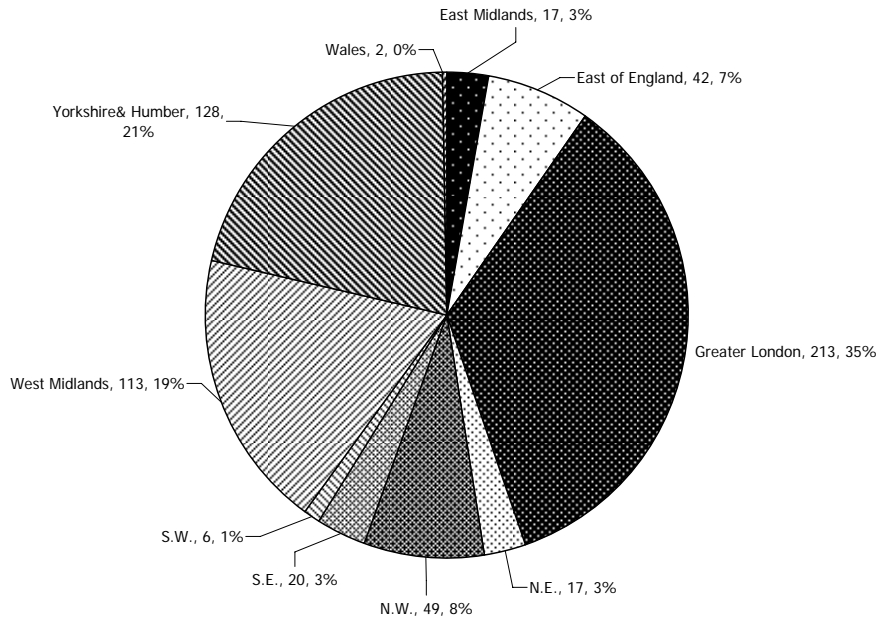


Figure 3. Current whereabouts of refugee teachers registered by the end of June 09 by region in numbers and by percentage.

- Greater London area and Yorkshire and Humberside continue to be the two largest areas where registered refugee teachers reside.

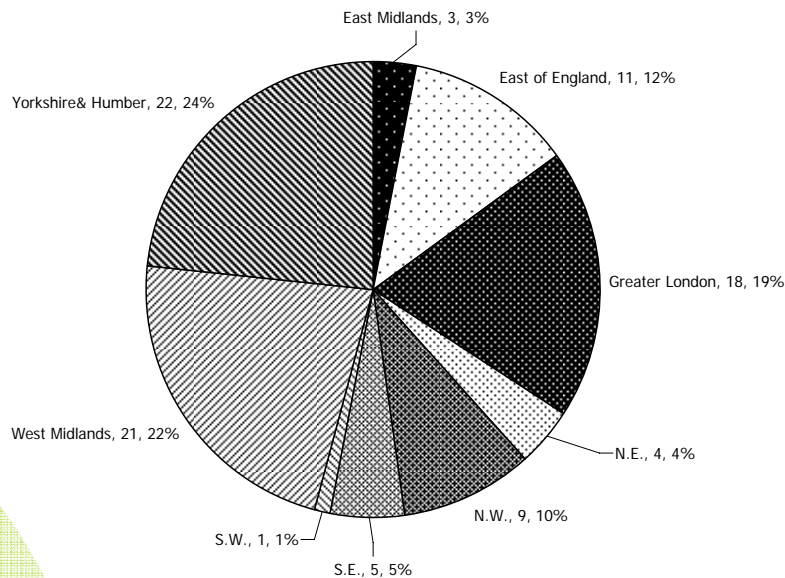


Figure 4. Regions where registrations were received during April- June 09 quarter.

British Refugee Council, (commonly called the Refugee Council) is a company limited by guarantee registered in England and Wales, [No 2727514] and a registered charity, [No 1014576].
Registered office: 240-250 Ferndale Road, London SW9 8BB, United Kingdom. VAT reg no: 936 519 988



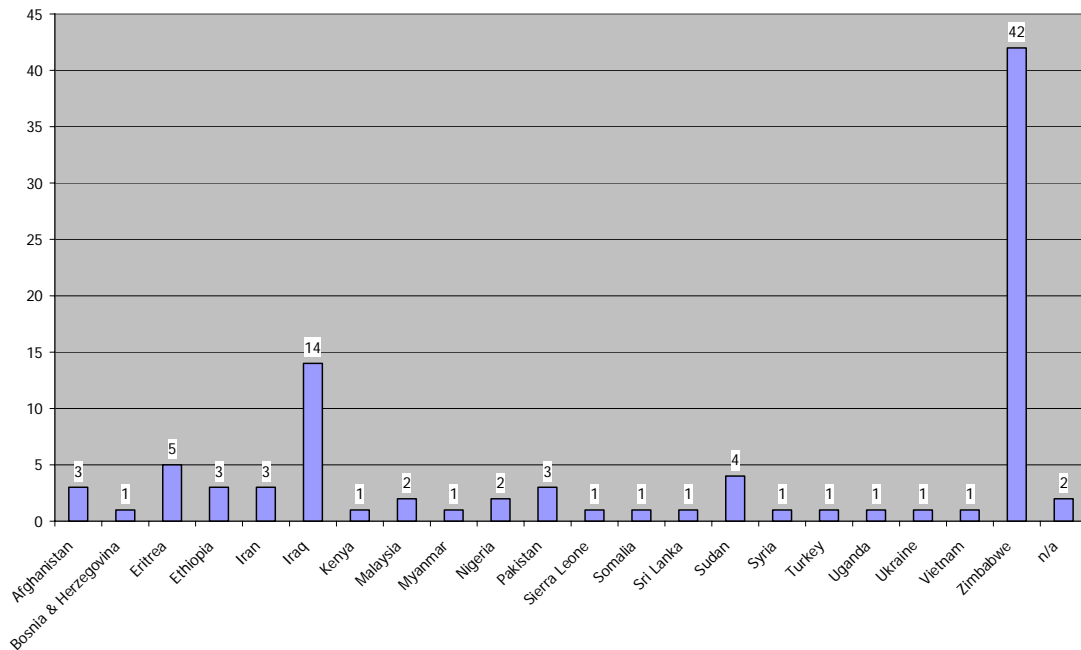


Figure 5. Countries of origin of the refugee teachers registered on the National Refugee Teachers Database during the April- June 09 quarter.

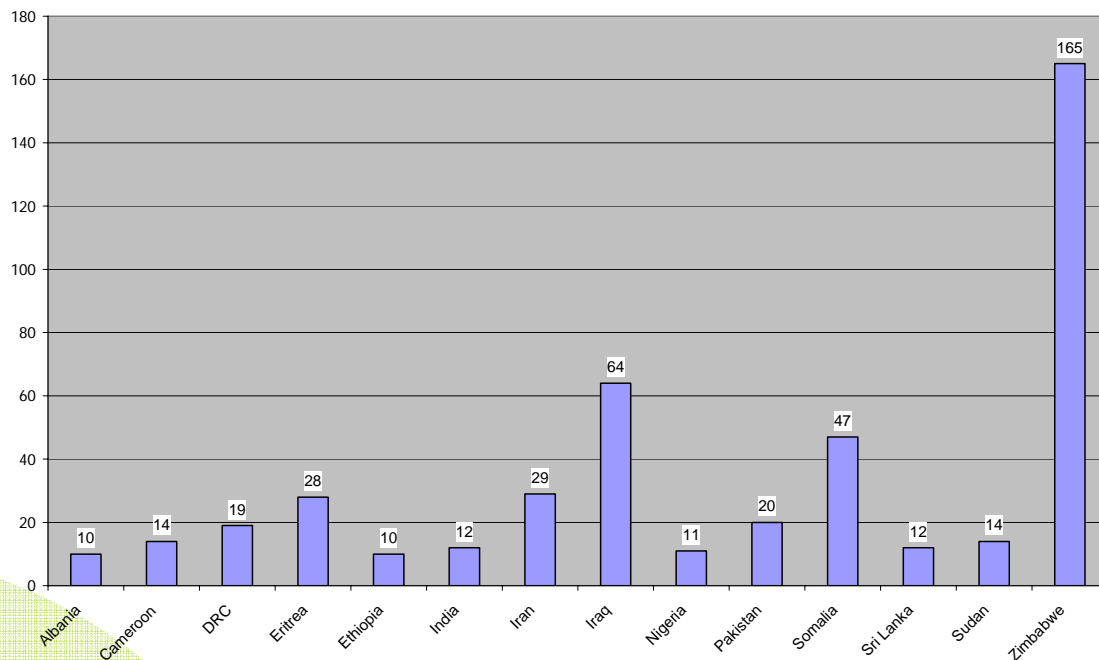


Figure 6. Top 14 of nationalities registered on the National database by the end of June 09.

- Zimbabweans and Iraqi teachers continue to form the biggest nationality groups of registered clients.
- All in all the clients registered on the National database come from 61 different countries.

British Refugee Council, (commonly called the Refugee Council) is a company limited by guarantee registered in England and Wales, [No 2727514] and a registered charity, [No 1014576].
Registered office: 240-250 Ferndale Road, London SW9 8BB, United Kingdom. VAT reg no: 936 519 988



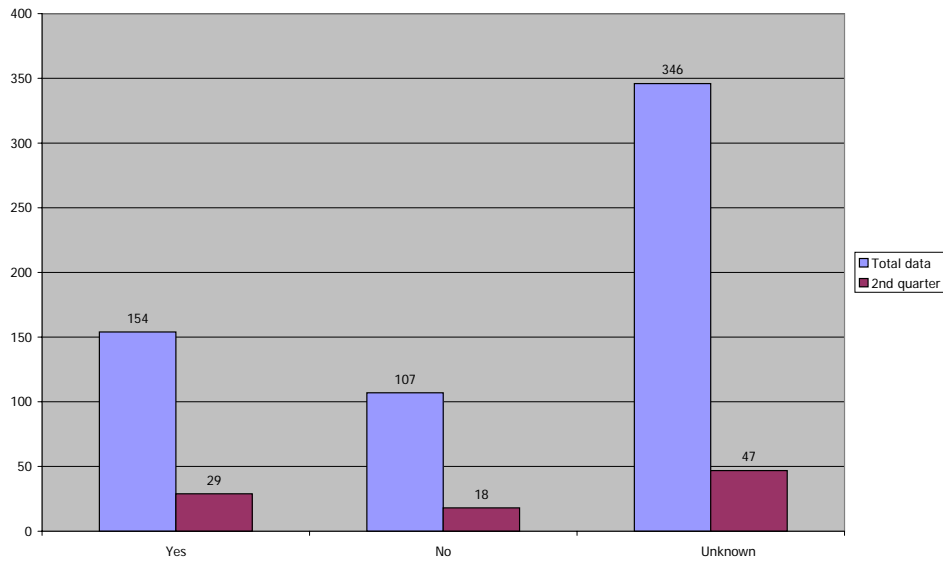


Figure 7. Teaching qualifications before arriving to UK. Blue indicating the data from 30.06.2006 to 30.06.2009 and purple indicating the data from April- June 09 quarter.

- 29 of the refugees registered during the April-May 09 quarter claimed to have an overseas teaching qualification.
- Overseas teaching qualification field has not been a compulsory question in the past, which may explain the number of data not being available.

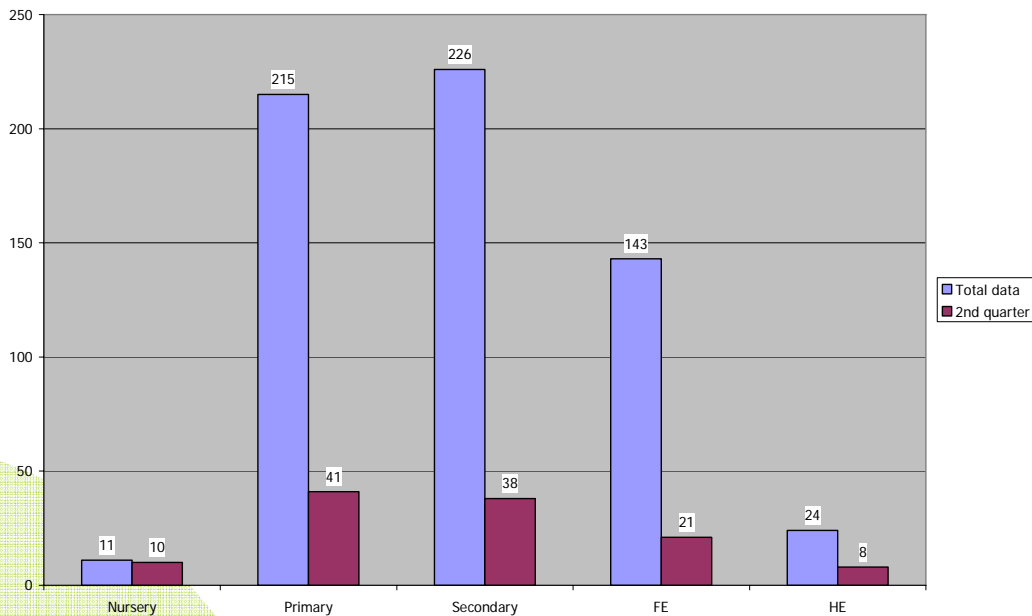


Figure 8. Areas of teaching interest. Blue indicating the data from 30.06.2006 to 30.06.2009 and purple indicating the data from April-June 09 quarter.

N.B. The figures are out of possible 607 for the total data and 94 for the quarterly data. Respondents were able to choose multiple options.

British Refugee Council, (commonly called the Refugee Council) is a company limited by guarantee registered in England and Wales, [No 2727514] and a registered charity, [No 1014576].
Registered office: 240-250 Ferndale Road, London SW9 8BB, United Kingdom. VAT reg no: 936 519 988



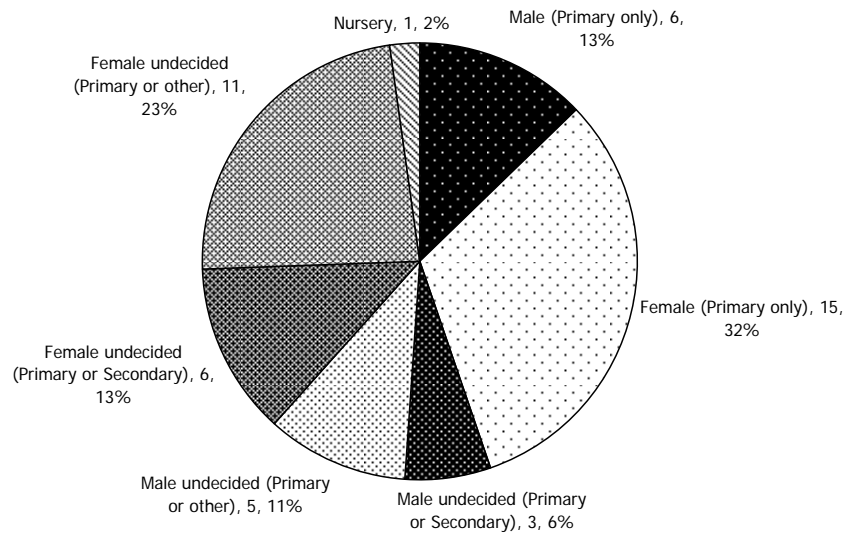


Figure 9. Numbers of teachers interested in teaching at primary level this quarter (out of 94). 14 undecided teachers also appear under secondary numbers.

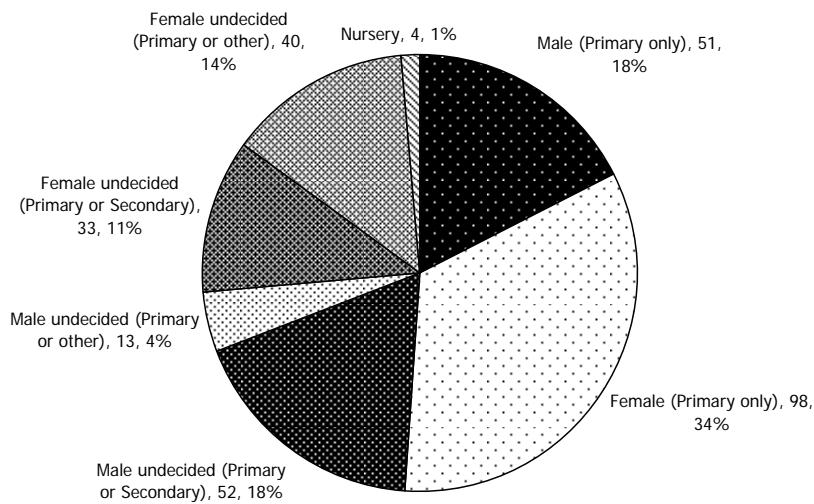


Figure 10. Numbers of teachers interested in teaching at primary level registered on the database (out of 607). 96 undecided teachers also appear under secondary numbers.

British Refugee Council, (commonly called the Refugee Council) is a company limited by guarantee registered in England and Wales, [No 2727514] and a registered charity, [No 1014576].
Registered office: 240-250 Ferndale Road, London SW9 8BB, United Kingdom. VAT reg no: 936 519 988



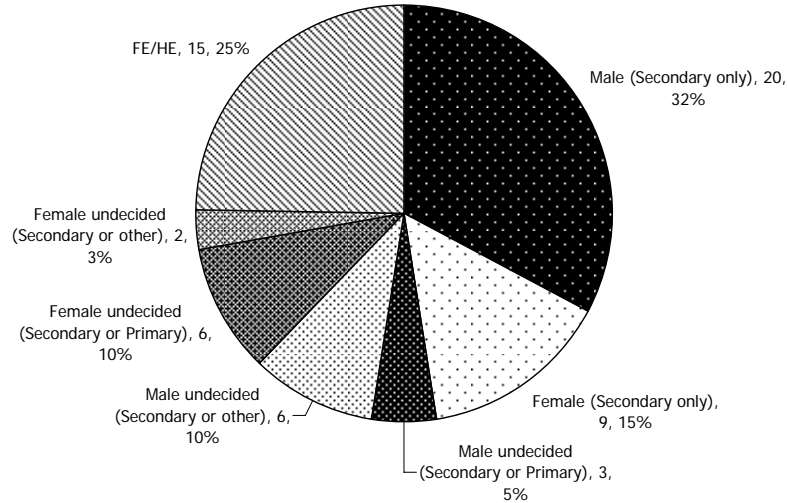


Figure 11. Numbers of teachers interested in teaching at secondary level this quarter (out of 94). 14 undecided teachers also appear under primary numbers.

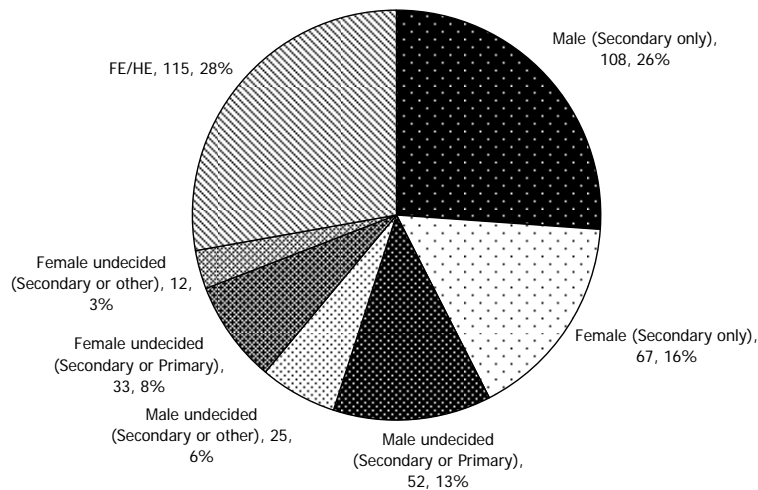


Figure 12. Numbers of teachers interested in teaching at secondary level registered on the database (out of 607). 96 undecided teachers also appear under primary numbers.

- Gender split in primary and secondary level teaching shows the same trend as seen in previous reports: women are still generally more interested in teaching at primary level and men are more interested in teaching at secondary level. (Figures 9. to 12.)

British Refugee Council, (commonly called the Refugee Council) is a company limited by guarantee registered in England and Wales, [No 2727514] and a registered charity, [No 1014576].
Registered office: 240-250 Ferndale Road, London SW9 8BB, United Kingdom. VAT reg no: 936 519 988



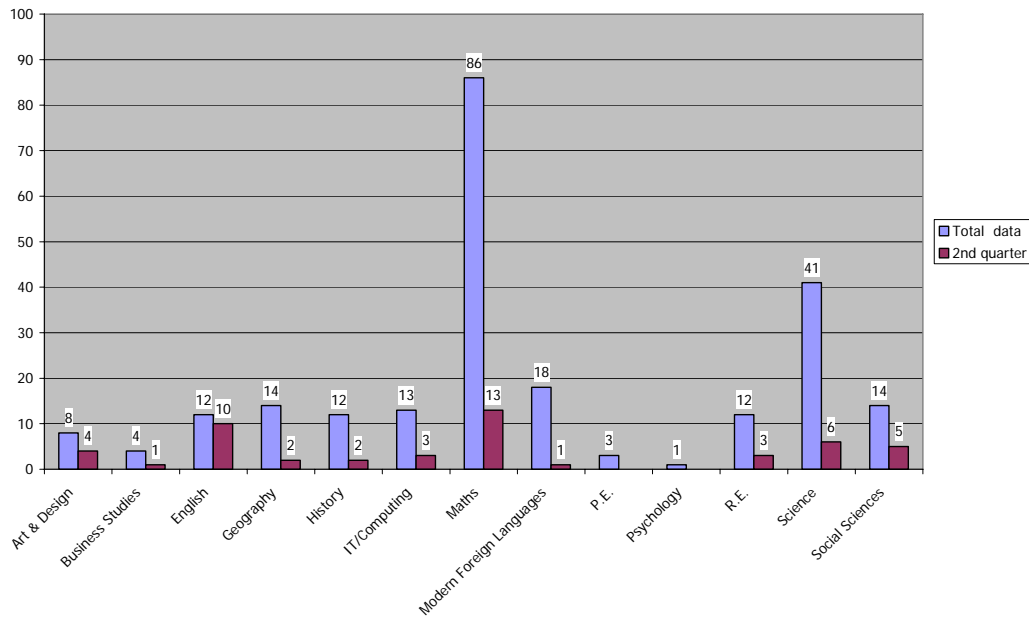


Figure 13. Subjects secondary teachers interested in teaching. Blue indicating data from the whole database, purple indicating the data form April- June 09 quarter.

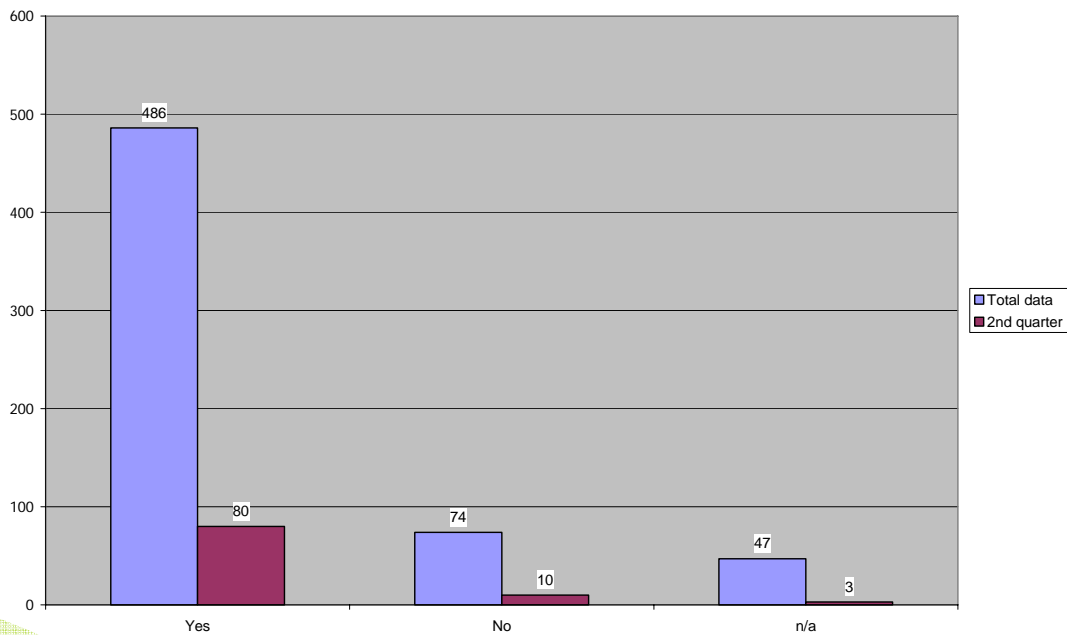


Figure 14. Refugee teachers who have original school/qualification certificates with them in the UK. Blue indicating data from the whole database, purple indicating the data form April- June 09 quarter.